

Specification

MSR360-1/360-2

MSG360-1/360-2

Precision: $\pm 3\text{mm}/15\text{m}$

Wavelength: 630nm - 670nm

Laser Class: Class 2 (IEC/EN60825-1/2007)

Horizontal/Vertical Accuracy: $\pm 3\text{mm}/10\text{m}$

Self-leveling Range: $4^\circ \pm 1^\circ$

Self-leveling Time: $\leq 3\text{s}$

Up Plumb Accuracy: $3\text{mm}/15\text{m}$

Working Distance (Line with Detector): 80m with detector

Operating Time: 16 Hours (all laser beams on)

Color: Yellow and red for option

Net Weight: 380g

Gross Weight: 780g

Product size: 10cm*8cm*6cm

Packaging size: 16cm*14cm*13cm

One carton: 18bags/carton

Carton Dimension: 80cm*39cm*34cm Gross weight: 21.88kgs

μmeasure®



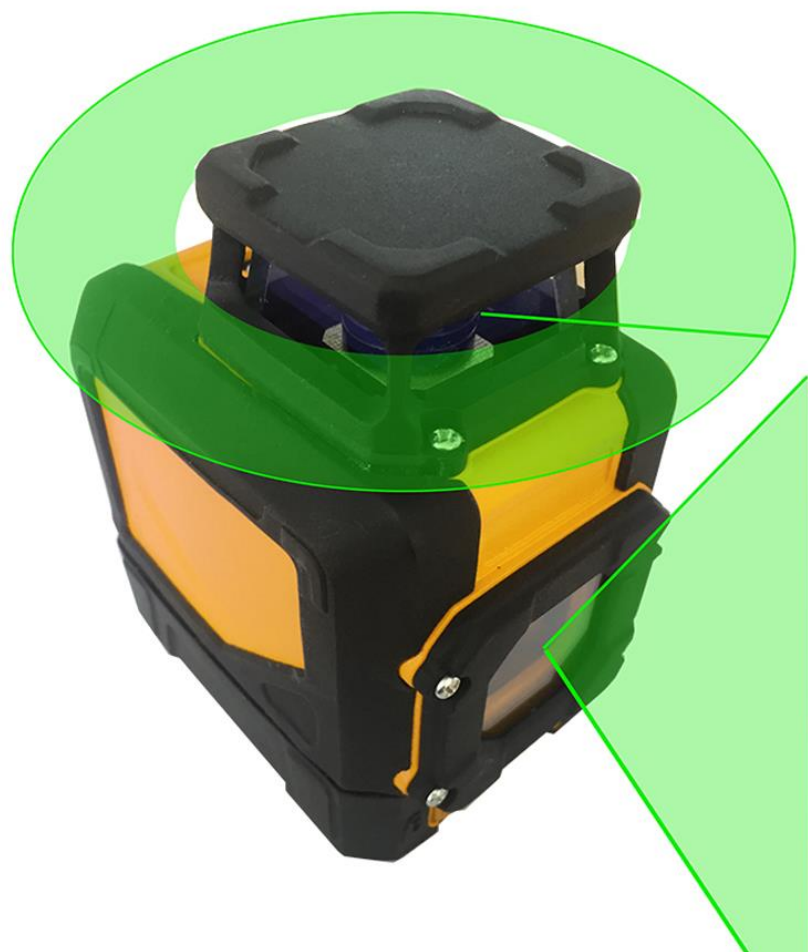
μmeasure[®]



μmeasure®



μmeasure®





Manual

1x360°Plane / 1 Vertical Beam Laser

“锥/柱镜”型投线仪

2x360°Plane Laser

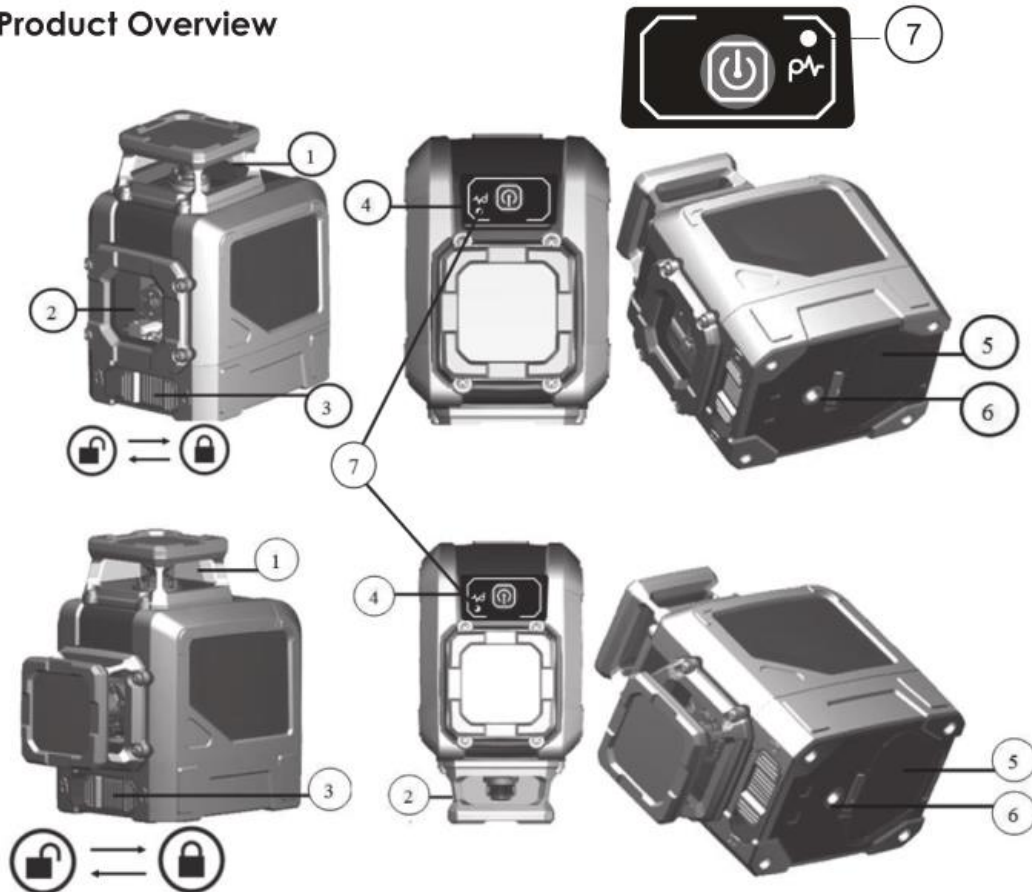
“双锥”型投线仪



Self-Levelling



Product Overview



1. window for 360° horizontal coverage beam
2. window for vertical coverage beam
3. pendulum/transit lock
4. keypad
5. battery door
6. 1/4"-20 threaded mount
7. LED indicator

Safety

WARNING:

- Read the Safety Instructions and User Manual thoroughly before using this product. All users must fully understand and adhere to these instructions.

CAUTION:

- While the product is in operation, be careful not to expose your eyes to the emitting

laser beam (red or green light source). Exposure to a laser beam for an extended time may be hazardous to your eyes.

CAUTION:

- Glasses may be supplied in some of the laser tool kits. These are NOT certified safety glasses. These glasses are ONLY used to enhance visibility of beam in brighter environments or at greater distances from laser source.

WARNING:

- The following label/print samples are placed on the product to inform of the laser class for your convenience and safety.



- Do not stare directly into the beam or view directly with optical instruments or set up the laser at eye level.
- Do not disassemble the laser tool. There are no user serviceable parts inside.
- Do not modify the laser in any way. Modifying the tool may result in hazardous Laser Radiation Exposure.
- Do not operate the laser around children or allow children to operate the laser. Serious eye injury may result.
- An exposure to the beam of a Class 2 laser is considered safe for a maximum of 0.25 seconds. Eyelid reflexes will normally provide adequate protection.

General Notes:

- A short Press on keypad can turn laser tool ON when it is in the Locked Position and project all laser beams where they flash every 5 seconds;
- Unlocking the laser tool by switching to the Unlocked Position can also turn the laser tool ON and project all laser beams where they may flash twice a second when laser tool is out of self-leveling range.
- Press repeatedly to cycle through the available modes.
- Press and hold for ≥ 2 seconds to turn laser tool OFF ONLY when the pendulum is locked.
- Self-leveling Mode is enabled when the laser tool is switched to the Unlocked Position.

Manual Mode

- can be activated by a short press when the pendulum lock is in the Locked Position to position the laser tool at various angles to project non-level straight lines where they will flash every 5 seconds.
- Accuracy of the beam(s) is not guaranteed to be level in Manual Mode.

Pulse Mode

- Full time Pulse

It is activated once the laser tool is turned On and allows use with laser detector.


- Outdoor Pulse

It is activated by a press and hold ≥ 2 seconds when laser tool is in the Unlocked Position. All available beams will flash rapidly 5 times to alert user, and LED indicator will turn on in solid blue. Another press and hold ≥ 2 will deactivate the Outdoor Pulse Mode where all available beams will flash rapidly 5 times to alert user and the laser tool will get back to Full Time Pulse Mode and LED Indicator will turn off.

Note: Outdoor Pulse Mode will allow use with laser detector in even brighter environments or at much greater working distances.

Specifications

1x360°Plane / 1 Vertical Beam Laser Specifications

Laser Class: Class 2 (IEC/EN60825-1/2014)	Laser Wavelength: 630~670 nm
Leveling Accuracy: $\pm 3\text{mm}/10\text{m}$	Horizontal/Vertical Accuracy: $\pm 3\text{mm}/10\text{m}$
Leveling/Compensation Range: $4^\circ \pm 1^\circ$	Working Distance (Line): 30m (100 LUX)
Power Source: 4×"AA" (LR6)	IP Rating: IP54
Operating Time: 10 hours with all laser beams on	
Operation Temperature Range: $-10^\circ\text{C} - +50^\circ\text{C}$	
Storage Temperature Range: $-20^\circ\text{C} - +70^\circ\text{C}$	

2x360°Plane Laser Specifications

Laser Class: Class 2 (IEC/EN60825-1/2014)	Laser Wavelength: 630~670 nm
Leveling Accuracy: $\pm 3\text{mm}/10\text{m}$	Horizontal/Vertical Accuracy: $\pm 3\text{mm}/10\text{m}$
Leveling/Compensation Range: $4^\circ \pm 1^\circ$	Working Distance (Line): 30m (100 LUX)
Power Source: 4×"AA" (LR6)	IP Rating: IP54
Operating Time: 8 hours with all laser beams on	
Operation Temperature Range: $-10^\circ\text{C} - +50^\circ\text{C}$	
Storage Temperature Range: $-20^\circ\text{C} - +70^\circ\text{C}$	

Warranty

We are confident of the quality of our products and offer outstanding guarantee for professional users of the products. This statement is in addition to and in no way prejudices your contractual rights as a professional user or your statutory rights as a private non-professional user. We warrant our laser level(s) against faults in materials and/or workmanship for one year from date of purchase provided that:

- Proof of purchase is produced.
- Service/repairs have not been attempted by unauthorized persons;
- The product has been subject to fair wear and tear;
- The product has not been misused;
- Defective products will be repaired or replaced, free of charge or at our discretion, if sent together with proof of purchase to our authorized distributor(s).
- This Warranty does not cover faults caused by accidental damage, unfair wear and tear, and use other than in accordance with the manufacturers' instructions or repair or alteration of this product not authorized by us.
- Repair or replacement under this Warranty does not affect the expiry date of the Warranty.
- To the extent permitted by law, we shall not be liable under this Warranty for indirect or consequential loss resulting from faults in this product. This Warranty may not be varied without our authorization. Calibration and care are not covered by warranty.

NOTE: The customer is responsible for the correct use and care of the tool.

Moreover, the customer is completely responsible for periodically checking the accuracy of the laser, and therefore for the calibration of the tool.

Packaging

